

1978
Royale & Birchaven
Motor Homes



Royale

Interior Features

Sleeps 4.
 AM/FM Stereo Radio w/8 Track.
 Fire Extinguisher.
 Foam Insulation.
 Systems Monitor Panel.
 Luxurious Walnut Interior.
 Carpeting w/Foam Padding.
 Soft-Look Herculon Upholstery.
 Decorator Pillows.
 Skirted Seats (Driver and Passenger).
 Divider Drapes (Driving/Living Area).
 Cedar Lined Wardrobe w/Light and Carpeted Shelf.
 Decorative Roman Style Woven Wood Shades.
 Folding Wood Parquet Door.
 Interior Courtesy Light.
 Interior Decors: Spring, Rust, Gunpowder, and Oyster.
 Bunk Bracket Framing Built-In.

Galley and Dinette

Double Stainless Steel Sink w/ Faucet and Spray.
 Combination Sink Covers/Serving Trays.
 4-Burner Range w/Smoked Glass Oven door.
 Stainless Steel Range Top and Power Range Vent w/Light.
 Laminated Countertops.
 Front Dinette Converts to Double Bed (40" x 72").
 Dinette Table Features Recessed Coasters.
 Hutch/Refreshment Center Combo (26SB only).

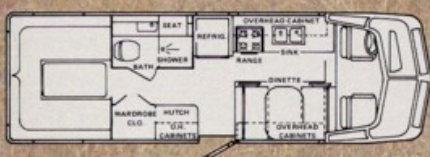
Heating System

62 lb. LP Gas Tank w/Triple L Valve.
 30,000 BTU Forced Air Furnace w/Electronic Ignition and Thermostat.

Electrical

30 Amp Power Cord 25' Long.
 Ground Fault Interrupter.
 110-Volt Exterior Duplex Receptacle.
 12-Volt Lighting.
 12-Volt Triad Power Converter w/Fuse Panel and 9-Amp Battery Charger.
 Porch Light.
 Prewired and Framed for 2 Air Conditioners.

Royale



26' Side Bath w/Rear U-Dinette

Bath

Rear Bath: Marine-Type Stool. Tub w/ Personal Shower. Medicine Cabinet. Exhaust Fan. Closet Space.
 Side Bath: Molded Bath Module w/ separate Shower Stall. Features Full Width Vanity, Medicine Cabinet, Shower Stall.

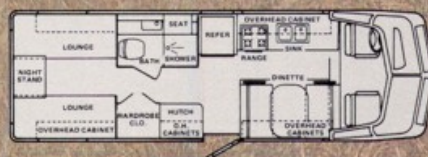
Water and Plumbing

Dual Holding Tanks.
 40-Gallon Water Tank (151.4 Litres).
 6-Gallon LP Water Heater w/Engine Preheat and Electronic Ignition.
 Rear Mounted Container for Disposal Hose.
 City Water Hook-up.
 Potable Gravity Water Fill.
 12-Volt Water Pump.

Options

*Snack Tray.
 *Auxiliary Battery Pack.
 *10 Cu. Ft. Gas/Electric Double Door Refrigerator.
 6,000 Watt Onan Generator w/slide out tray.
 TV Antenna.
 11,000 or 13,500 BTU Air Conditioner.
 Two Swing-Up Bunks.
 Center Privacy Drape. (26 RB)
 Roof Rack and Ladder.
 Sofa Option (replaces dinette seat).
 Microwave Oven.
 Food Blender.
 Digital Clock.
 Water Purifier.
 Vacuum Cleaner.
 Rear "U" Lounge in 26' SB.
 *Window Packages.
 40 Amp Service.

*MANDATORY



26' Side Bath

Birchaven

Interior Features

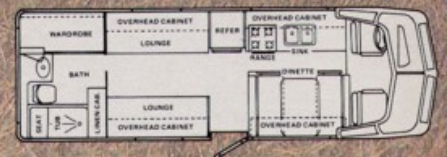
Sleeps 4.
 Systems Monitor Panel.
 Fire Extinguisher.
 Foam Insulation.
 AM/FM Stereo Radio w/8-Track.
 Rich Birch Interior.
 Carpeting w/Foam Padding.
 Soft-Look Herculon Upholstery.
 Decorator Pillows.
 Skirted Seats (Driver and Passenger).
 Divider Drapes (Driver/Living Area).
 Decorative Window Shades w/Side Drapes.
 Folding Wood Parquet Door.
 Cedar Lined Wardrobe w/Light and Carpeted Shelf.
 Interior Courtesy Light.
 Bunk Bracket Framing Built-In.

Galley and Dinette

Front Dinette w/Table Featuring Recessed Coasters.
 Dinette Converts to a Double Bed (40" x 72").
 Double Stainless Steel Sink w/Faucet and Spray.
 Combination Sink Covers/Serving Trays.
 6.6 Cu. Ft. Gas/Elec. Refrigerator.
 4-Burner Range w/Smoked Glass Oven Door.
 Stainless Steel Range Top and Power Range Vent w/Light.
 Laminated Countertops.
 Rear, Side-Facing Settee w/Recessed Extension Table Converts to a 54" x 80" Bed (SB).
 Hutch/Refreshment Center Combo (23' RB only).
 Hamper (23' SB).
 Interior Decors: Gunpowder, Spring, Rust & Oyster.

Heating System

62 lb. LP Gas Tank w/Triple L Valve.
 30,000 BTU Forced Air Furnace w/Electronic Ignition and Thermostat.



26' Rear Bath

Electrical

30-Amp Power Cord 25' Long.
 Ground Fault Interrupter.
 110-Volt Exterior Duplex Receptacle.
 12-Volt Lighting.
 12-Volt Triad Power Converter w/
 Fuse Panel and 9 Amp Battery
 Charger.
 Prewired and Framed for 1 Air
 Conditioner.
 Porch Light.

Bath

Rear Bath: Marine-Type Stool. Tub w/
 Personal Shower. Medicine
 Cabinet. Exhaust Fan. Closet
 Space.
 Side Bath: Molded Bath Module w/Full
 Width Vanity. Medicine
 Cabinet w/Sliding Doors.
 Personal Shower. Exhaust
 Fan. Marine-Type Stool.

Water and Plumbing

Dual Holding Tanks.
 40-Gallon Water Tank (151.4 Litres).
 6-Gallon LP Water Heater w/Engine
 Preheat and Electronic Ignition.
 Rear Mounted Container for Disposal
 Hose.

City Water Hook-up.
 Potable Gravity Water Fill.
 12-Volt Water Pump.

Options

- *Snack Tray.
- *Auxiliary Battery Pack.
- 4,000 Watt Onan Generator w/
 Slide Out Tray.
- TV Antenna.
- Roof Rack and Ladder.
- 11,000 or 13,500 BTU Air Conditioner.
- Single Swing-Up Bunk (RB).
- Pull Down Bunk w/Ladder (SB).
- Sofa Option (replaces dinette seats).
- Microwave Oven (SB only).
- Food Blender.
- Digital Clock.
- Water Purifier.
- Vacuum Cleaner.
- *Window Packages.

*MANDATORY



Chassis and Body Specifications

Engine

Gasoline, GMC 403, 8-cylinder, V-type.
 High Energy Ignition System.

Transmission

3-speed Turbo-Hydramatic, 425 with
 Cooler.

Tire Size

8.75 x 16.5 (D Load Range) Whitewall,
 Steel Belted Radials.

Fuel Tank

Dual 25-gallon w/Fuel Tank Gauge.
 Selector Switch.

Air Conditioning

(Automotive Type).

Front Axle

Torsion Bar Suspension.
 Steering, Integral Gear Power Assist.
 Steering Column. Tilt Type.
 Turning Diameter Curb to Curb, 56.4 ft.
 Royale (50.2 ft. on Birchaven).
 Cruise Control.

Rear Axle

Independently Suspended Tandem
 Wheels.
 Air Suspension w/Leading and Trailing
 Arms.
 Two Height Control Valves.

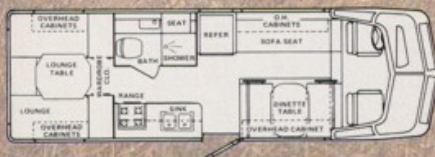
Brakes

Vacuum Boosted w/Dual (split) System.
 Front Disc 11" x 1.205"
 Rear Drum (4) 11" x 2"

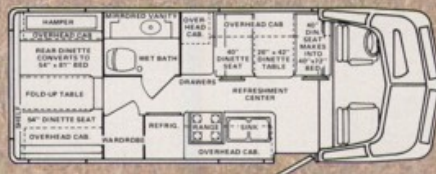
GVWR

12,500 lbs.—Royale
 11,200 lbs.—Birchaven

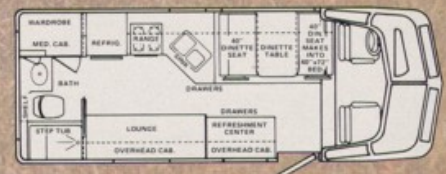
Birchaven



26' Ck



23' Side Bath



23' Rear Bath