



Motorhome **TRAVELER**

January/February, 1979

Ed Allen Gives His Big Wheels A Customized, Personalized Look

by Lynette McDonald ✓

How much time and money does a GMC Motorhome owner invest in personalizing his or her vehicle? The answer depends partly on the owner's comfort requirements and tastes, and partly on how much of the fixing-up work will be farmed out to others and how much the owner is prepared to handle.

For Ed Allen of Los Angeles, a GMC Motorhome owner and a cabinetmaker by profession, fulfilling his own specific comfort and aesthetic requirements in recreational vehicle arrangements was mostly a matter of investing lots and lots of time. And now Allen can sit back and reap the rewards.

Allen's GMC unit is a 23-footer. He's put in almost a solid year of working on the motorhome since getting it new in 1977. And his reward is a highly individualized vehicle, one in which he feels relaxed and comfortable whether simply driving around town or on a long trip to wherever the road leads — and no matter what the accommodations may be at road's end.

Before acquiring the GMC, Allen owned a pickup and camper long enough to develop clear ideas on what he wanted for weekend, holiday, and vacation recreation. Then he set out to build into the GMC exactly what he needed.

Interior remodeling began with new doors on cabinets and new tops on counters. Then the dining area was replaced by Allen's custom-designed sofa that makes into a double bed for extra sleeping capacity.

Drawers that seemed unnecessary were removed to make room for a microwave oven. A color television and telephone were installed in the bedroom, and a black-and-white TV was put on a swivel mount in the sitting area. And that was only the beginning!

Because he's tuned in to sounds other than those on the road, Allen longed for an

Continued on page 8



The swivel-type front seats were re-upholstered for a closer fit to Allen's revised interior decor.



Close to a year of spare-time work was invested by Ed Allen, shown above with his GMC Motorhome, in making the unit just exactly what he wants.

LETTERS



To The Editor

Dear Maryann:

Now comes the dreary season of no GMC motorhoming . . . sad . . . the leaves are turning their beautiful fall shades and falling to the ground . . . so it seemed a good time to reflect on the past year of the GMC Prairie Schooners.

After about two years of struggle the club finally got going with the election of officers for 1978 at a rally in April . . . even though it was wet and cold a lot of the time and some GMCs had to be helped out of their parking spots, there was no dampness in the spirits of the Prairie Schooners.

Our second rally of the season was held in our state's beautiful Ozarks with the GMCs all parked overlooking Table Rock Lake.

Our third get-together for the year was our ten GMC Motorhome Caravan to the Grand National Rally at Delavan, Wisconsin . . . there is no sight prettier than a group of GMCs parked together or especially rolling down the open highway in caravan . . . it is truly a spectacular sight.

Our fourth rally had many firsts for our club . . . as we toured a distillery and winery, and had our main meal catered . . . followed by a wine and cheese tasting party.

Our fifth rally was a do-nothing rally at Melvern Lake in Kansas . . . just a get-together in good old camaraderie . . . and since it was pretty cold mornings and evenings, the favorite gathering place was the campfire.

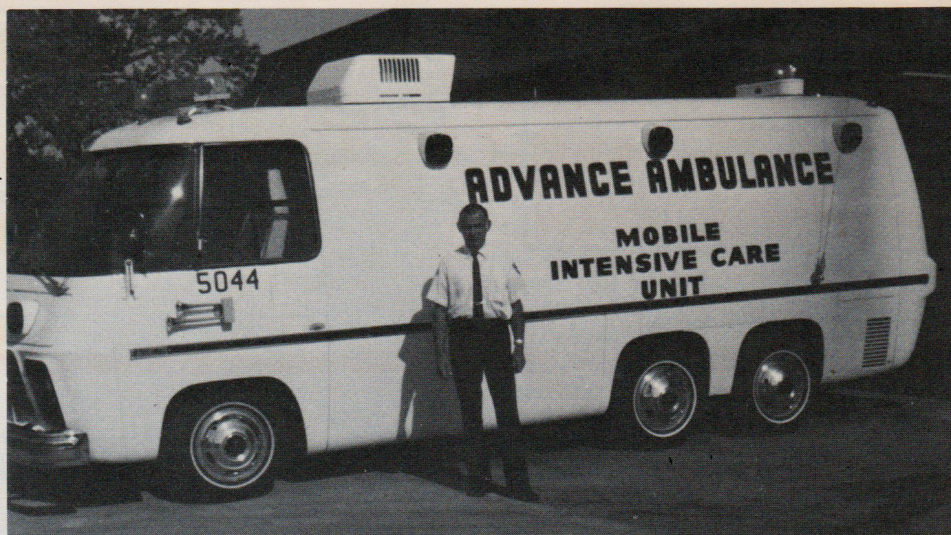
Our last get-together for the year was held at a Ramada Inn, with cocktails and dinner preceding our business meeting and election of officers for 1979.

The 1978 Prairie Schooners' year was a fantastic one and everyone is looking forward with great anticipation to 1979 . . . several rally plans are already brewing, including a couple of rolling rallies . . . one possibly to Mexico and another to Alaska.

Edie Copeland

Prairie Schooners GMC-MOA Chapter

Editor's Note: While Edie Copeland bemoans "the dreary season of no GMC motorhoming," more than a few GMCers keep their units on the road the year 'round. True, many of these are in the "Sunbelt" states. But other owners winterize their units and adapt their driving techniques to winter conditions for GMCee-ing where the snow falls!



This GMC Transmode unit carries ID Number 336 V100 730 and, at the close of 1978, had logged more than 135,000 miles in a life-and-death service for residents of the Northshore and Northern Chicago areas. Owned and operated by Advance Ambulance Service, Chicago, this is a mobile intensive care unit. Beyond response to the general run of emergency calls, this unit — and its on-board crew of trained paramedics — also handles special assignments in transporting critical patients to hospitals providing such specialties as burn, cardiac, neonatal, or spinal cord care. A number of special systems, as well as such life-saving devices as heart-lung resuscitator and an incubator, plus emergency medications and radio communications, make this vehicle — in truth — a complete intensive care unit on wheels. GMC Transmode wheels, that is.

SERVICE TIPS

When You Need Glass

Just in case you're ever in need of replacement glass for your GMC Motorhome, you might want to clip this article and add it to the manuals and other information in your file on "Service".

The Libbey-Owens-Ford Company, a principal producer of automotive glass, has a replacement glass division. And through this division, LOF Company maintains inventories of replacement parts for GMC Motorhomes — such parts as windshields, back lights, vents, and door glasses — in various locations throughout the United States.

Also, there is an automotive glass replacement expeditor assigned to the staff of each LOF regional sales office. These expeditors can be of valuable assistance in locating a hard-to-find part.

Here's a list of the LOF offices, the names of the expeditors currently at each, and the telephone number:

- Atlanta, Ida Benton, (404) 355-7320.
- Los Angeles, Chris Wagner, (212) 846-2153.
- Chicago, Linda Wieneke, (312) 296-7754.
- Dallas, Selma Goswick, (214) 521-4940.
- New York, Noreen Mulligan, (201) 947-8000.
- Toledo, Lynda Autry, (419) 247-4892.

Besides L-O-F, suppliers of glass parts as original and replacement equipment for GMC Motorhomes include: Hehr International, Inc., 1103 West Pearl St., Chesaning, MI 48616, phone (517) 845-3061; Excel Industries, 1003 Industrial Parkway, Elkhart, IN 46514, phone (219) 264-2131; and Pittsburgh Plate Glass, PPG Industries, 1 Gateway Center, Pittsburgh, PA 15222, phone (412) 434-3450.

Watch for more information helpful in obtaining replacement of glass in the next issue of the TRAVELER.

GMC Motorhome
TRAVELER

January /
February, 1979

Vol. 4, No. 1

Editor: Maryann Grausam
Associate Editor: Nancy McCamy
Published as a service to GMC Motorhome owners by GMC Truck & Coach, 660 South Boulevard East, Room 210, Pontiac, Mich. 48053.
Articles from readers are welcomed.

University's "On the Go Video" Is Housed in GMC Transmode Unit

This story is adapted from an article by Dan Baker, Coordinator of Instructional Television at California State University, Long Beach, and published in the March, 1977, issue of EDUCATIONAL & INDUSTRIAL TELEVISION magazine. It reports on an unusual adaptation of the GMC Motorhome/Transmode configuration to meet a specialized and challenging need in, apparently, a most effective manner.

Early in the 1970s the Instructional Television department at California State University, Long Beach reached a major decision: Our plan for a television production facility would never become a reality, so a mobile van was our way to go.

Then we fell in love with the idea of a GMC Transmode for our unit when we saw the TV van put together (in a 23-foot GMC Transmode) by VideoMobile and CFI in Burbank.

Today our department's "On the Go Video" color TV mobile van — a complete television production system housed in a 26-foot GMC Transmode unit — is exactly what we wanted it to be. It's first class, inside and out.

What we needed was a van that would hold control consoles, SEG, switcher, character generator, CCUs, scopes, waveforms, monitors, VTRs, two color cameras and mounts, several hundred feet of cable for each camera, mics, stands, cue cards, portable lights and stands — the whole thing. And it also had to have room for seating for a director, technical direc-

tor, and audio and video engineers, and be able to carry a seven-person crew in case there was no extra car available in the car pool.

What we have is a vehicle that, besides accommodating all the equipment and people, provides the smoothest ride in its class — on and off the road. It has air-bag suspension and load leveling. It has automatic shift and cruise control. It has an Onan generator for stand-alone power and air conditioning for front and back console areas. It has a low profile (the body is only 8 feet high) and keeps its heavy load close to the ground for safety and stability.

And it looks smart. Members of the administration are proud of it as a highly visible image for the university in the community.

In 1975, the cost of our Transmode, a 26-foot model, was about \$20,000. The equipment in it cost approximately \$150,000. The money came from sources above and beyond the normal budget — grants funded in response to our mobile concept for improving instruction. And sharing what we have with the community around us was the clincher.

In our mobile TV operations, we do not shoot material for broadcast. Rather, we produce short, medium, and long videotape programs for individual and group viewing by faculty and students on campus, or by public non-commercial TV users off campus.

The production crew staffing the Transmode begins with a full-time paid staff of four, working inside the van. This nucleus is supplemented by any one of several teams of three — two camera people and one stage manager — working outside the van. These teams are drawn from paid student assistants and student interns in the departments of radio-TV, journalism, instructional media, theater, art, music, and others.

The equipment we work with (all that listed above and more) was installed in the Transmode after delivery of the vehicle. Campus maintenance craftsmen did the wiring, cabinet-making, paneling, and floor covering. It took longer that way. But we got more of what we wanted.

Today, the GMC Transmode video van is a most glamorous part of "On the Go Video" at Long Beach. We know it. And we take pride in the professionalism of the Instructional Television department — which the Transmode helps to promote.

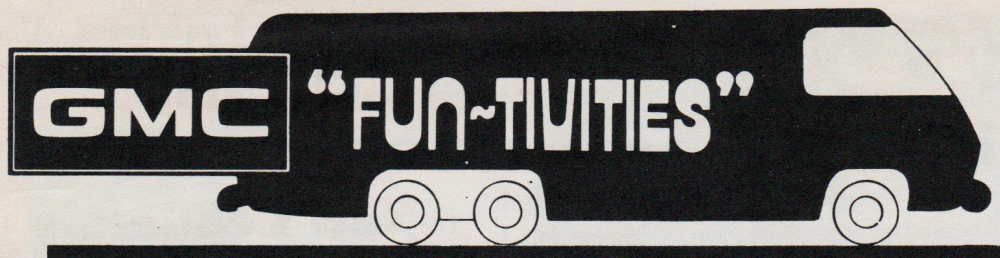
Bickel Chosen President of Gateway Motor Cruisers

Basil Bickel, of Ladue, MO, has been elected President of the GMC-MOA "Gateway Motor Cruisers" Chapter for 1979. Bickel succeeds Charles Laws in the office.

Other officers named for the chapter are: Vice President, Bob Powell; Secretary, Ann Evans; Treasurer, Nancy Renz; and National Director, Henry Struss.



This 26-foot GMC Transmode unit is the mobile control room for "On the Go Video" operations of the Instructional Television department of California State University, Long Beach. The unit transports all needed production equipment and as many as seven staff persons, besides housing a complete control room installation.



Rolling Vagabonds Stage "End-of-Summer" Rally

Members of the "Rolling Vagabonds" Chapter of GMC-MOA held their "End-of-Summer" Rally at Rhinelander, WI, on the weekend of September 22-24. Bruce Horner was Wagonmaster for the caravan from Milwaukee to the campsite, and Gollub and Neita Perenich were host and hostess.

Here's how Arlene Gull summed things up in the Chapter newsletter:

"We would like to give a great round of applause to Gollub and Neita Perenich for their hosting of the Rhinelander Rally. Goody bags, a campfire that never went out, an endless pot of coffee, the very interesting Logging Museum, and a tremendous breakfast of juice, pancakes, and pork sausage . . . all added up to a special rally. The weather was absolutely perfect. Colorama (for a color tour of the area to see the countryside in autumn colors) was not at its peak, but that only means we will just have to come back to Rhinelander again soon."

Others saluted for their contribution to the rally's success included Bill and Sally Bayliss, for hot homemade donuts; Bessie Olson, for her delicious shrimp appetizer; and Jan Gull, for her great apple coffee cake.

'49ers Rally, Elect

The "Columbia Caper" rally of the GMC-MOA "Forty Niners" Chapter drew 21 motorhomes and 53 participants to the Yankee Hill Campground in Columbia State Park, Columbia, CA, the weekend of November 10-12.

Following a buffet dinner at the home of Stan and Arleen Sheldon, the Forty Niners celebrated their second anniversary with a birthday cake and champagne. On Saturday evening, the group enjoyed dinner at the historic City Hotel in the Columbia State Park.

Chapter officers elected for 1979 are: Stan Sheldon, President; Bud Pearson, First Vice President; Ed Correa, Second Vice President; Orine Pearson, Secretary; Shirley Coley, Treasurer; and V. G. Lambert, National Director.

Colonial Travelers Enjoy Rally at Williamsburg

When the GMC-MOA "Colonial Travelers" Chapter held an Autumn Rally, the somewhat-distant Colonial Williamsburg, in Virginia, was the designated site. There were 14 member coaches and a guest coach — from Connecticut, Pennsylvania, and New Jersey — when they met on Friday, October 6, at the Colonial Campgrounds of the rally city.

And here's how Mary Lou Boatman, Secretary, describes the following day:

"Saturday dawned beautiful with plenty of sunshine to warm the autumn breezes. After enjoying a Continental breakfast our impressive motorcade was off, drawing its share of admiration and curiosity. The day passed quickly, as time does when you're having fun, but by late afternoon — after many tours and much shopping — we were all looking forward to dinner.

"We had reservations at Christianna Campbell's Tavern in Colonial Williamsburg and this provided our Chapter with a most apropos atmosphere. Dining in rustic charm by candlelight, we could almost hear Patrick Henry and his illustrious patriots discussing Colonial independence. The food was superlative and included some colonial delights, such as sweet potato muffins and spoon bread dishes, which are not a custom in our area.

"Following dinner, a tour through candlelit Williamsburg under a star-studded sky left many with a feeling of awe. We were at last ready to return to our comfortable coaches with electricity and yes, even TV, to see who would be playing in the World Series.

"Many of our group were not yet ready to say goodby to the area on Sunday and extended their stay to include Jamestown and other places of interest. Our thanks again to the Irvins and Matthews for a well-organized and memorable rally."

Western Reserve Gets Out-numbered Again!

Does your GMC-MOA Chapter have a neighbor chapter as a friendly rival? For the GMC-MOA "Western Reserve" Chapter the near-home competitor is the "Country Club", and — as Bob and Joanne Butcher make clear in the club newsletter — that puts added spice into GMCee-ing. Specifically:

"Caravan to Bob Evans Farm [at Gallipolis, OH, for the Festival held in October] a fantastic success — and a real ball! Four coaches went down on Friday. When we arrived at the grounds it was raining cats and dogs, but that did not dampen spirits.

"We felt good, as Western Reservers, because for the first time we had more coaches at the event than the Country Clubbers from Columbus.

"But it did not last long. By Saturday morning 38 total coaches had arrived — with Western Reservers only 8 of that total. Oh, well . . . we had to come the furthest!

"Byers out of Columbus [George Byers Sons, Inc., the GMC dealer] supplied vans and drivers to take all GMCee-ers from the grounds to the Bob Evans Farm and back. The food on Saturday night was great, and a fun time was had by all.

"On the return trip Sunday, some of the club members went to eat at Sugar Creek — in the heart of Amish country — and saw cheese being made. Sorry if you missed the fun!

"An Ice-Breaker Rally will be held sometime in February. No coaches! But plans are to have everyone attending this rally taught C.P.R. and certified by the Red Cross . . .

"Plans are going ahead to host the Country Clubbers this summer for a day at Sea World, plus an evening at The Forge, with a ride on an English double-decker bus to take us from the restaurant to a show. The campground will be open to GMC Motorhomes *only* for that weekend — and we are looking for over 60 coaches at this event."

— Bob and Joanne Butcher.

GMC Spirit Saves Event

Ever been involved in an event, much anticipated, where everything goes wrong — but the spirit of the people overcomes all the negatives? Then you'll appreciate this account of the GMC-MOA "Gateway Motor Cruisers" Christmas Party in Fenton, MO, by Ann Evans, Chapter Secretary.

"Christmas is the time of the year to be of good cheer. Our annual Christmas Party put the spirit of 'good will toward men' to the test for each of us. The place: The once-elegant Biltmore Club. The food: Not much to report on, due to the low light conditions. The music: Disco, measuring 90 decibels of noise on anyone's sound-level meter.

"What started out to be a disastrous evening at the Biltmore Club was soon salvaged by the spirit of the GMC members.

"Pat Holt was happy to receive the Corning Ware which was the door prize given by Marie Navin, donated by Commerce Bank of Florissant.

"Charles Laws, recipient of the 1978 presidential service award plaque, was offered congratulations by incoming president, Basil Bickel.

"We exchanged gifts, ate dinner, and wrapped up doggie bags all in the twinkling of St. Nick's eye. Then our holiday revelers left the blue-jeaned, bearded young set for the Viking Lounge, where our minks and formal attire won better acceptance. By 11:30 most of us had a case of the hungries, but as it was past the dinner hour, we settled for drinks in a banquet room. From there, a few starving souls motored to a Perkins Pancake House for a round of hot cakes and coffee at 2 a.m.

"Why not? It had been such a delightful evening, we hated to see it come to an end! Better luck next year! . . ."

— Ann Evans

Officers for 1979 Named By "Northern Stars" Club

D. E. "Hap" Hazzard has been elected to serve the GMC-MOA "Northern Stars" Chapter as President through 1979. Other officers chosen are: Harley Softing, Vice President; Charlotte Bellon, Secretary; Herb Lefor, Treasurer; Harley McDowell, National Director; and Irvin Weber, Alternate.

The election was part of the business at the Chapter's annual meeting and birthday party, held at the Elks Club in Jamestown, ND, in November. Plans for a schedule of four rallies during 1979 were also discussed.

Country Club Officers Elected at Club Rally

It was rain and mud at the Fall Rally of the GMC-MOA "Country Club" Chapter — but that didn't dampen enthusiasm or disrupt the planned activities. Here's how Barbara Sintz, Chapter Secretary, reported things:

"Our Fall Rally was held at the Bob Evans Farm Festival in Gallipolis, OH, on October 13-15. It was cold and wet and we had mud nearly up to our knees at the Festival. Fortunately, we did not have to park our coaches in the Festival area.

"And the people of the GMC dealer organization — George Byers Sons, Inc., Columbus, OH — were super. They provided a van for transportation from our camp location to the Festival, seven miles away. After dinner, they provided a good number of terrific prizes for our drawing.

"Following the dinner and giveaways, the nominating committee presented the candidates for officers for the 1979 period. Our officers will be as follows: President, William Sintz, Columbus, OH; First Vice President, Galen Faber, Swanton, OH; Second Vice President, Al Robinson, Wintersville, OH; Secretary, Charlotte Herrick, Louisville, KY; Treasurer, Gene Herrick, Louisville, KY; and National Director, Jim Dozer, Columbus, OH.

"Our 1979 activity calendar has not been completely firmed up, but it includes plans for an April rally at Mammoth Cave in Kentucky, a joint rally with the Western Reserve Chapter in June, a visit to Bucyrus, Ohio, for the Bratwurst Festival in August, and to Nelsonville, Ohio, for the Paul Bunyan Festival in September."

— Barbara Sintz

Great Lakers Hold Campout And Name New Leaders

Members of the GMC-MOA "Great Lakers" Chapter closed out their 1978 season with an autumn rally and the election of a slate of officers for the new year. Here's a summary of events, taken from the chapter newsletter.

"Again the Autumn Campout — at the Doctors' Club, Alpena, MI, on the weekend of October 13-15 — was a perfect ending to our camping season. This year the weather cooperated and everyone who rode into the woods reported seeing deer and wild turkey.

"We appreciate the hard work that went into the October campout. Margaret Lappan outdid herself selecting prizes this year, and her family worked as dealers. Emmet and Kay Dennis nursed the barbecued ribs all afternoon Saturday. It was great!

"At the rally the ballots were counted and the following are the 1979 officers: President, Ed Kurtz; First Vice President, Jerry Kamm; Second Vice President, Jim Lappan; Third Vice President, Emmet Dennis; Treasurer, Jim Kellerman; Secretary, Rae Gamble; National Director, Virgil Barbe; Alternate National Director, Clinton Long."

— Mary Lou Kamm



This edible version of a GMC Motorhome was the birthday cake shared by the GMC-MOA "Northern Stars" during their annual meeting in November. Vehicle specifications were: Interior of devil's food; wheels by Oreo cookies; windows of x-ray film; window frames of pipe cleaners! Lucille Hazzard provided the photo.

Bill and Cindy Ruth Offer Additional Ideas For Motorhome Fix-Up

Looking for ways to make living and traveling in your GMC Motorhome a little easier, a bit more comfortable? If so, you may want to adopt one or more of the modifications developed by Bill and Cindy Ruth, of Portuguese Bend, CA.

The Ruths use their GMC unit as their full-time dwelling. They also use it as most other GMC Motorhome owners use their coaches — for frequent weekend and other trips of varying length. From their experience, the Ruths have developed a number of coach modifications which they describe as “time savers, organizers, and convenience items.”

Other GMC Motorhome owners, the Ruths are confident, must have come up with equally innovative ideas for improving their coaching. And they'd very much like to see some systemized method for exchanging ideas with other owners.

Here are some of the ideas provided by the Ruths.

For an Open View

S-L is for sky-light. More properly, a pair of sky-lights. These add to the comfort and enjoyment of driving the GMC unit. But they're more appreciated when the front curtains are pulled for privacy — maintaining privacy but preventing a closed-in feeling, as well as allowing natural light

to enter.

What's I-C? That's the next item!

To Pass the Word

You should spot the letters I-C in two of the photographs. I-C stands for Intercom. This one links the driver's command post with the master bedroom so that, should the driver be alone at the wheel and need help while underway, the assistance can be easily summoned.

At the bedroom end, the two-way speaker — installed overhead — allows hand-free communication. The little white button on the “I-C” unit is a call buzzer, for getting the driver to pick up the handset.

And what is “R-L”? Read on!

Enlightening!

In the photo of the bedroom compartment overhead, note the reading light on the extreme right. As Bill Ruth notes:

“One light is OK for one reader. But if two people want to read, or if you want to shift away from the far end of the compartment — you're out of luck!”

R-L indicates the dual reading light installation the Ruths have added to their unit.

Checking Your Cool

T is for thermometer. This one is an

indoor-outdoor type, mounted next to the refrigerator unit of the Ruths' GMC Motorhome. The sensor normally used to keep track of the outdoor temperature has been installed *inside the refrigerator*.

Thus a single glance advises how well, or how poorly, the frig is doing the cooling job and whether defrosting will soon be in order.

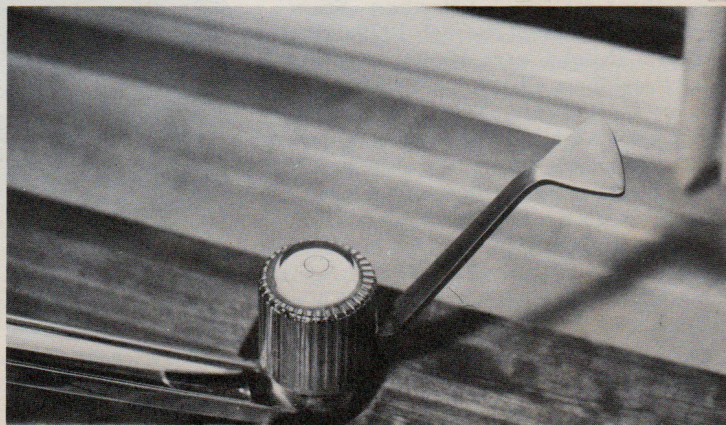
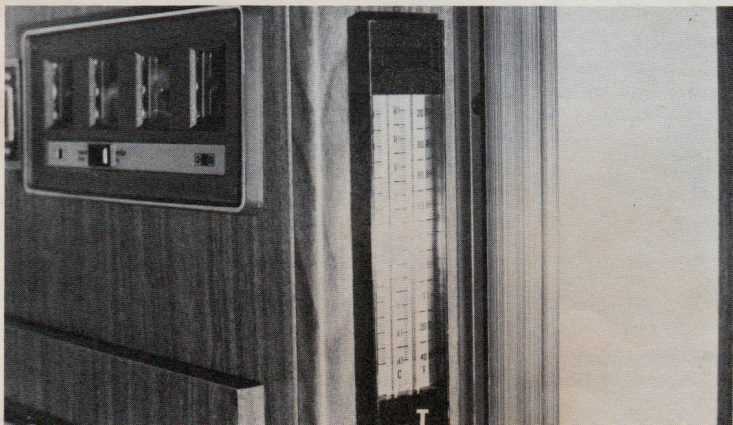
On the Level

The GMC Motorhome is designed and built so that it's easy to level, notes Bill Ruth. But, he adds, there's no really convenient reference by which you can determine when the coach is level.

That's why the Ruths modified the plastic cap on the galley water faucet. Now there's a circle scribed on the clear cap-piece, and there's a bubble in the contained liquid.

Result: The Ruths can level their coach without looking for a level. And they built in a level without sacrificing space!

Please note that publication of these ideas in the “GMC Motorhome TRAVELER” does not constitute endorsement or approval by GMC Truck & Coach Division. The GMC Motorhome owner who makes any of these modifications to a GMC unit must accept full responsibility for his or her action.



Here's a Special Offer On Mattel's "Barbie Doll" Model of GMC Motorhome

If there's a "Barbie Doll" enthusiast among the younger children in your family, this offer may be just what you're looking for in preparation for a birthday or other special occasion. It's the GMC "Barbie Doll" Motorhome by Mattel, now available for just \$21.00 plus handling and shipping.

Mattel introduced the "Barbie Doll" look-alike for the GMC Motorhome in 1977. The unit, three feet long, has an estimated retail value of \$25.95.

Features of the toy motorhome include many found in the real thing, such as a shower and swivel seats. There's a breakfast area with removable table with a complete kit of kitchen and bathroom linens. And a sun deck that holds an enclosed kit of deck chairs and a hibachi.

But note, please: *No dolls are included in the package.*

You can order one or more of the GMC "Barbie Doll" Motorhomes by Mattel by completing the coupon and mailing it, with check or money, to the address shown. The toy motorhome comes enclosed in an attractive full-color shipping carton.

It can make a great gift for the child — a grandchild, perhaps — who falls in love with your GMC Motorhome every time he or she gets to ride in it!



Made by Mattel, the GMC "Barbie Doll" Motorhome is three feet long and features many appointments that duplicate — in a play-with-dolls style and scale — the real thing.

GMC "Barbie Doll" Motorhome by Mattel Offer

**1815 Fisher Building
Detroit, Michigan 48202**

Phone: (313) 875-7818

The enclosed check or money order in the amount of \$_____ is in full payment for _____ GMC "Barbie Doll" Motorhome(s) by Mattel, at a price of \$21.00 plus a handling/shipping charge of \$2.50 for each one ordered. Please ship to:

Name _____ Telephone _____

Street Address _____

City _____ State _____ Zip _____

Continued from page 1

"incredible" sound system. He found what he feels to be the perfect answer in a personally-chosen assembly of stereo, tape deck, and speakers.

Mini-blinds were installed to replace draperies. Front swivel seats were re-upholstered with Naugahyde. Air conditioning, with thermostatic controls, was added.

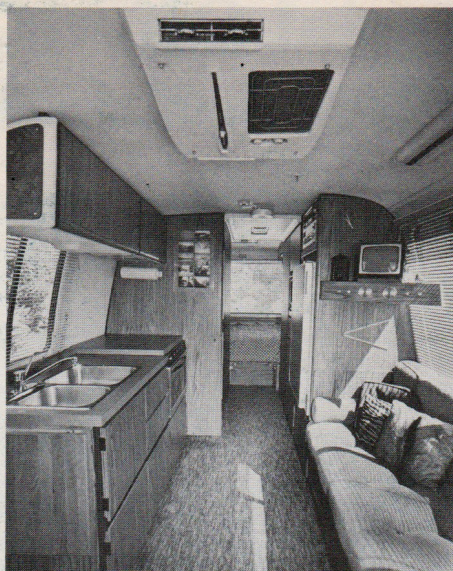
For an exterior as exceptional as the personalized interior, Allen gave his coach a new paint job. Basically, it's bright orange — with a black matte finish around the windows and black accent stripes.

To protect this investment, Allen installed an alarm system. Anyone touching the GMC — once it's parked and the alarm system turned on — sets off a wireless unit that operates on sound waves. A shrill alarm then sounds a warning that an intruder is nearby.

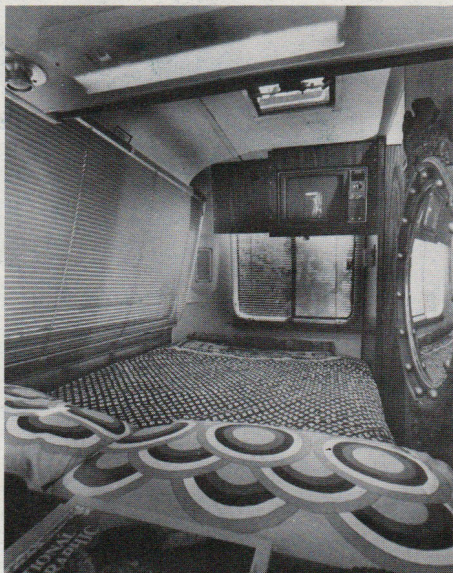
About once a month Allen travels en masse with friends on organized trips ranging from jaunts to week-long vacations. In between, when he wants an evening close to home, Allen simply fills up his coach with merrymakers and drives to the beach for cocktails and dinner.

+ + +

This story has been adapted, with permission, from one originally published in the August 20, 1978, edition of HOME Magazine, Los Angeles TIMES.



Replacing the draperies with blinds brings a different look to the galley/sitting area.



Note the color television set mounted for easy viewing from the double bed in Allen's sleeping quarters.

Want a GMC-MOA Name Tag? Here's How To Get One!

If you're a GMC Motorhome owner you probably have a GMC-MOA name tag that shows your chapter affiliation as well as your own name.

But if you don't have such a name tag, and would like to have one, now's your chance! The name tag is yours on request, from GMC Truck & Coach Division, if you act promptly.

Because this is the last call for requests for such tags. And requests will be accepted from individuals or, on behalf of groups, from officers of GMC-MOA chapters.

In either case, the following information is needed for each tag requested — the name of the club or chapter, the name of the member as the member wants it to appear on the badge, and the name and address to which the completed name tag is to be shipped.

Send your request to: Nancy McCamy, GMC Motorhome TRAVELER, GMC Truck & Coach Division, General Motors Corporation, 660 South Boulevard East, Room 202, Pontiac, MI 48053.

Prairie Schooners Name Chapter Officers for 1979

O. L. "Zed" Holland, of Kansas City, MO, has been chosen President of the GMC-MOA "Prairie Schooners" Chapter for the 1979 year. Other officers named by the chapter are:

First Vice President — Willis "Mac" McQueary; Second Vice President — Joan Timmons; Secretary and Treasurer — Coleen King; and GMC-MOA Representative — Edie Copeland.

Members of the chapter's Executive Board are Harlan Tatge, Joe Fisher, Chet McCarty, and Robert J. "Bob" Copeland. Copeland becomes the club's immediate Past President, having served in that office during 1978.

GMC Truck & Coach Division
General Motors Corporation
660 South Boulevard East, Rm. 202
Pontiac, Michigan 48053

ADDRESS CORRECTION REQUESTED



FIRST CLASS MAIL
U.S. POSTAGE
PAID
Permit No. 4352

TZE 03 3 V102253
R N RUPP
10714 MT TIPTON
SAN ANTONIO TX 78213