

1978
Royale & Birchaven
Motor Homes







Royale

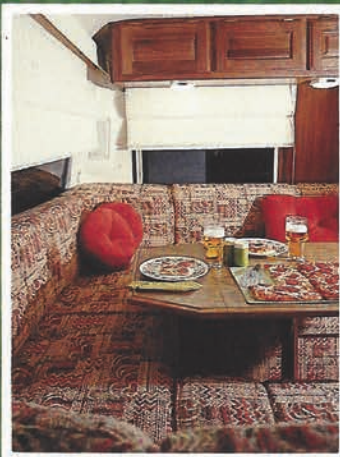
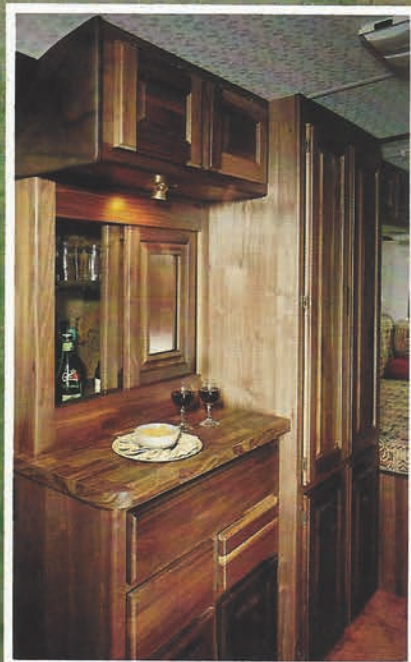
The GMC Royale is the standard for comparison in the industry. Luxurious and functional. Solid walnut interior, rich fully padded carpeting. Plush upholstery that's comfortable and Herculon tough. Shades are decorative, roman style woven wood. There's even a cedar lined wardrobe to keep your clothes fresh while traveling.

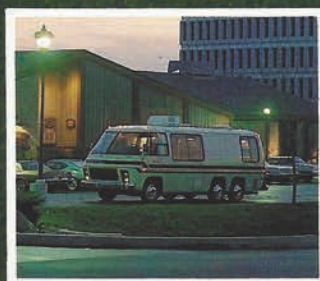
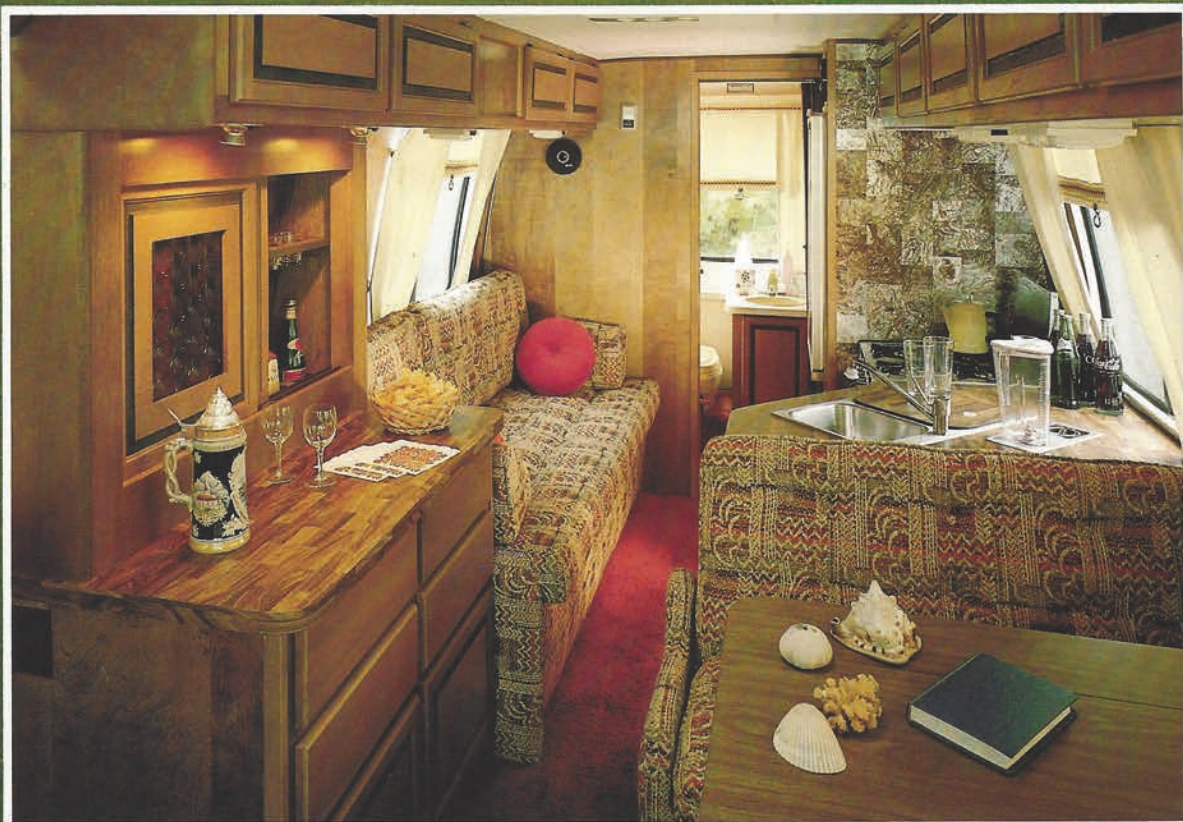
The galley is fully equipped for care-free living with double stainless steel sink, 4-burner range and big 10 cubic ft. double-door refrigerator. A microwave oven and food blender are convenient options. The Royale Side Bath offers a complete hutch/refreshment center. Spacious dinettes, sofas and lounges convert to equally spacious and comfortable beds and bunks. Baths feature vanities, exhaust fan, medicine cabinet, marine-type stool, personal shower (with tub on Rear Bath) and pewter hardware.

But the comfort doesn't end there. Innovatively engineered the Royale is a superior road handler with front wheel drive, air suspension, automatic travel height control as well as tandem rear wheels and cruise control.

At the campsite utilize the 110 volt exterior duplex receptacle, shore line power cord, 30,000 BTU furnace and power levelers.

Step into the comfort and innovation of the 1978 GMC Royale Motorhomes. Built for customers like you.







Birchaven

Treat yourself to the ultimate in travel elegance and superb craftsmanship. With interiors that are family tough and well laid out. Rich Birch cabinets and paneling, padded carpets and soft-look upholstery throughout. Lots of living space. Large windows with full size screens. Dinettes (double dinette in Side Bath model) and sofas convert to spacious beds and bunks.

The kitchens offer all the conveniences of home. Double stainless steel sink, 4-burner range with oven, 6.6 cubic ft. refrigerator and laminated countertops.

The baths are complete with marine-type stool, medicine cabinet, exhaust fan, and personal shower (shower and tub in Rear Bath models.)

Like the Royale, the Birchaven is engineered to give you a quiet, smooth and responsive ride. The outer body is built with aluminum ribs and stringers—not unlike that of an aircraft fuselage. It's made to resist corrosion and is fully insulated.

Distinct in styling and skillfully engineered, the 1978 GMC Birchaven is a beautifully thought out motorhome.



Royale

Interior Features

Sleeps 4.
AM/FM Stereo Radio w/8 Track.
Fire Extinguisher.
Foam Insulation.
Systems Monitor Panel.
Luxurious Walnut Interior.
Carpeting w/Foam Padding.
Soft-Look Herculon Upholstery.
Decorator Pillows.
Skirted Seats (Driver and Passenger).
Divider Drapes (Driving/Living Area).
Cedar Lined Wardrobe w/Light and Carpeted Shelf.
Decorative Roman Style Woven Wood Shades.
Folding Wood Parquet Door.
Interior Courtesy Light.
Interior Decors: Spring, Rust, Gunpowder, and Oyster.
Bunk Bracket Framing Built-In.

Galley and Dinette

Double Stainless Steel Sink w/Faucet and Spray.
Combination Sink Covers/Serving Trays.
4-Burner Range w/Smoked Glass Oven door.
Stainless Steel Range Top and Power Range Vent w/Light.
Laminated Countertops.
Front Dinette Converts to Double Bed (40" x 72").
Dinette Table Features Recessed Coasters.
Hutch/Refreshment Center Combo (26SB only).

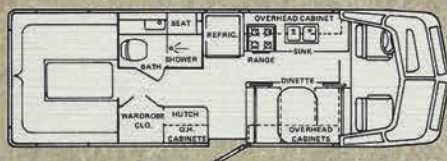
Heating System

62 lb. LP Gas Tank w/Triple L Valve.
30,000 BTU Forced Air Furnace w/Electronic Ignition and Thermostat.

Electrical

30 Amp Power Cord 25' Long.
Ground Fault Interrupter.
110-Volt Exterior Duplex Receptacle.
12-Volt Lighting.
12-Volt Triad Power Converter w/Fuse Panel and 9-Amp Battery Charger.
Porch Light.
Prewired and Framed for 2 Air Conditioners.

Royale



26' Side Bath w/Rear U-Dinette

Bath

Rear Bath: Marine-Type Stool. Tub w/ Personal Shower. Medicine Cabinet. Exhaust Fan. Closet Space.
Side Bath: Molded Bath Module w/ separate Shower Stall.
Features Full Width Vanity, Medicine Cabinet, Shower Stall.

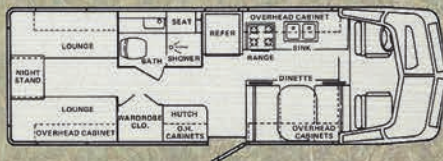
Water and Plumbing

Dual Holding Tanks.
40-Gallon Water Tank (151.4 Litres).
6-Gallon LP Water Heater w/Engine Preheat and Electronic Ignition.
Rear Mounted Container for Disposal Hose.
City Water Hook-up.
Potable Gravity Water Fill.
12-Volt Water Pump.

Options

*Snack Tray.
*Auxiliary Battery Pack.
*10 Cu. Ft. Gas/Electric Double Door Refrigerator.
6,000 Watt Onan Generator w/slide out tray.
TV Antenna.
11,000 or 13,500 BTU Air Conditioner.
Two Swing-Up Bunks.
Center Privacy Drape. (26 RB)
Roof Rack and Ladder.
Sofa Option (replaces dinette seat).
Microwave Oven.
Food Blender.
Digital Clock.
Water Purifier.
Vacuum Cleaner.
Rear "U" Lounge in 26' SB.
*Window Packages.
40 Amp Service.

***MANDATORY**



26' Side Bath

Birchaven

Interior Features

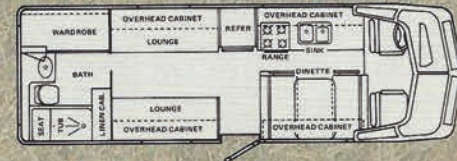
Sleeps 4.
Systems Monitor Panel.
Fire Extinguisher.
Foam Insulation.
AM/FM Stereo Radio w/8-Track.
Rich Birch Interior.
Carpeting w/Foam Padding.
Soft-Look Herculon Upholstery.
Decorator Pillows.
Skirted Seats (Driver and Passenger).
Divider Drapes (Driver/Living Area).
Decorative Window Shades w/Side Drapes.
Folding Wood Parquet Door.
Cedar Lined Wardrobe w/Light and Carpeted Shelf.
Interior Courtesy Light.
Bunk Bracket Framing Built-In.

Galley and Dinette

Front Dinette w/Table Featuring Recessed Coasters.
Dinette Converts to a Double Bed (40" x 72").
Double Stainless Steel Sink w/Faucet and Spray.
Combination Sink Covers/Serving Trays.
6.6 Cu. Ft. Gas/Elec. Refrigerator.
4-Burner Range w/Smoked Glass Oven Door.
Stainless Steel Range Top and Power Range Vent w/Light.
Laminated Countertops.
Rear, Side-Facing Settee w/Recessed Extension Table Converts to a 54" x 80" Bed (SB).
Hutch/Refreshment Center Combo (23' RB only).
Hamper (23' SB).
Interior Decors: Gunpowder, Spring, Rust & Oyster.

Heating System

62 lb. LP Gas Tank w/Triple L Valve.
30,000 BTU Forced Air Furnace w/Electronic Ignition and Thermostat.



26' Rear Bath

Electrical

30-Amp Power Cord 25' Long.
Ground Fault Interrupter.
110-Volt Exterior Duplex Receptacle.
12-Volt Lighting.
12-Volt Triad Power Converter w/
Fuse Panel and 9 Amp Battery
Charger.
Prewired and Framed for 1 Air
Conditioner.
Porch Light.

Bath

Rear Bath: Marine-Type Stool. Tub w/
Personal Shower. Medicine
Cabinet. Exhaust Fan. Closet
Space.
Side Bath: Molded Bath Module w/Full
Width Vanity. Medicine
Cabinet w/Sliding Doors.
Personal Shower. Exhaust
Fan. Marine-Type Stool.

Water and Plumbing

Dual Holding Tanks.
40-Gallon Water Tank (151.4 Litres).
6-Gallon LP Water Heater w/Engine
Preheat and Electronic Ignition.
Rear Mounted Container for Disposal
Hose.

City Water Hook-up.
Potable Gravity Water Fill.
12-Volt Water Pump.

Options

*Snack Tray.
*Auxiliary Battery Pack.
4,000 Watt Onan Generator w/
Slide Out Tray.
TV Antenna.
Roof Rack and Ladder.
11,000 or 13,500 BTU Air Conditioner.
Single Swing-Up Bunk (RB).
Pull Down Bunk w/Ladder (SB).
Sofa Option (replaces dinette seats).
Microwave Oven (SB only).
Food Blender.
Digital Clock.
Water Purifier.
Vacuum Cleaner.
*Window Packages.

*MANDATORY



Chassis and Body Specifications

Engine

Gasoline, GMC 403, 8-cylinder, V-type.
High Energy Ignition System.

Transmission

3-speed Turbo-Hydramatic, 425 with
Cooler.

Tire Size

8.75 x 16.5 (D Load Range) Whitewall,
Steel Belted Radials.

Fuel Tank

Dual 25-gallon w/Fuel Tank Gauge.
Selector Switch.

Air Conditioning

(Automotive Type).

Front Axle

Torsion Bar Suspension.
Steering, Integral Gear Power Assist.
Steering Column. Tilt Type.
Turning Diameter Curb to Curb, 56.4 ft.
Royale (50.2 ft. on Birchaven).
Cruise Control.

Rear Axle

Independently Suspended Tandem
Wheels.
Air Suspension w/Leading and Trailing
Arms.
Two Height Control Valves.

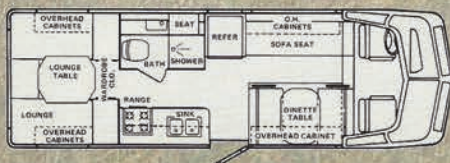
Brakes

Vacuum Boosted w/Dual (split) System.
Front Disc 11" x 1.205"
Rear Drum (4) 11" x 2"

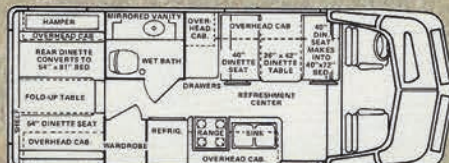
GVWR

12,500 lbs.—Royale
11,200 lbs.—Birchaven

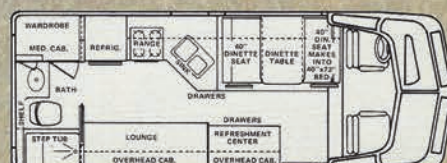
Birchaven



26' Ck



23' Side Bath



23' Rear Bath

JIMMY EXTRAS

THE R.V.I.A. SEAL. The Recreational Vehicle Industry Association (R.V.I.A.) is the national trade association serving the recreational vehicle industry. Manufacturers must comply with federal construction standards to belong to R.V.I.A. Before you invest in a recreational vehicle, look for the R.V.I.A. seal. It's your assurance of a safe, dependable travel home.



ONE STOP SERVICE. Your authorized Jimmy dealer offers you the finest of service people and facilities. He can provide you with service on your GMC chassis as well as the Jimmy body. This means you'll get fast one stop service. Your Jimmy card makes you a part of an exclusive club of Jimmy owners.



OWNERS MANUAL. The unit's gas, electrical and plumbing systems; its running gear; winter storage; and use; and maintenance are among the subjects included in the Owners Manual.



COACH-LITE SUPPLY. For dependable replacement parts, accessory items and general supplies, see your Coach-Lite Dealer. Coach-Lite Supply Company is the largest Warehouse Distributor in the United States, having five major warehouses across the country. You benefit from Coach-Lite's volume buying of new and better products when you shop at a Coach-Lite Dealer store. Ask your local Dealer for a new comprehensive Coach-Lite Campware catalog.



Coachmen Industries works year 'round to improve it's products. Accordingly all specifications, equipment, and prices set forth in Jimmy literature are subject to change without notice and/or obligations.

Jimmy MOTOR HOMES

DIVISION OF COACHMEN INDUSTRIES, INC.

1100 N. Woodlawn Ave., Elkhart, Indiana 46514 • Telephone 219-262-2645

McEENEY MOTORS, INC.
21 Main Ave. - Ph. 319/243-7000
CLINTON, IA 52732