



FOR GMC MOTOR HOMES...

Interiors by Avion

## "Traveling Cabinetry" —A Rather Special Art

Building fine cabinets is one thing. Building them to withstand the continuing stress of vehicular movement is something else again. It requires expertise born of extensive experience, plus uncompromising standards of quality control.

Avion hand-fitted cabinetry has a nationwide reputation for beauty, utility and durability that reflects nineteen years of superior performance under all conceivable road conditions.

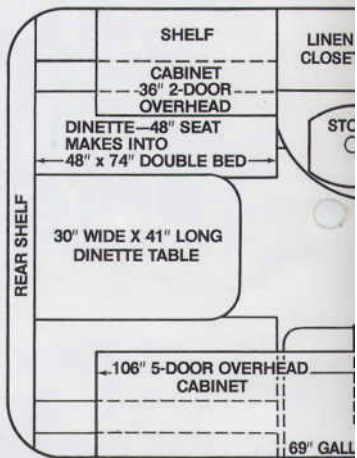
Each cabinet is specifically designed to accept the strain of jolts, jerks and vibrations for the life of your GMC motor home. Mortise and tenon construction—fastened and glued—must pass six inspections prior to installation. Every drawer must slide freely, every door close snugly. There can be no warps, gaps or misfits.

And Avion gives you so much storage room! Every available cubic foot is utilized in a floor plan that still leaves a spacious interior for your abiding pleasure. You'll be surprised and delighted to find how much you can store in your Avion cabinets.

Avion interiors include top-name appliances, bedding and appointments, plus luxurious, deep-nap carpeting and coordinated upholstery. The plan and photos at right will tell you a lot. A close, personal inspection will tell you there is no finer motor home interior.



Avion interior design puts every foot of space to work. Note efficient arrangement of galley and dinette.

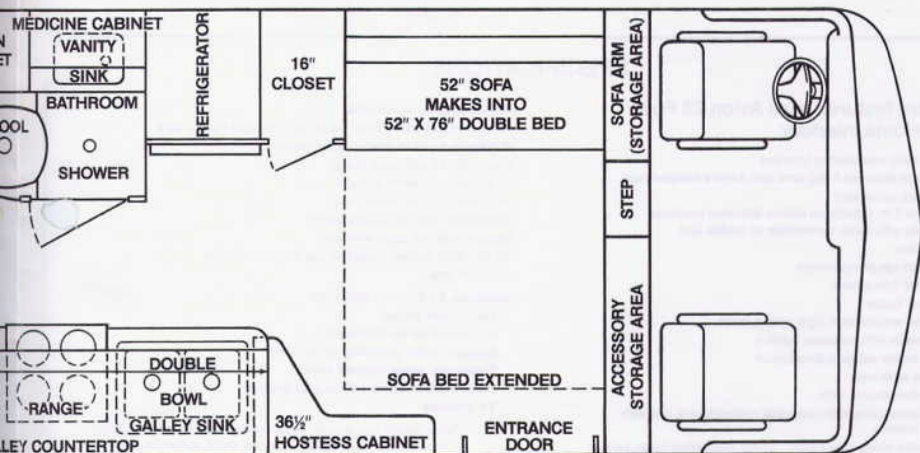




All cabinetry is handcrafted woodwork in light walnut finish, built to last the life of your motor home.



Carpeting extends into driver compartment and is color-coordinated with other interior fabrics.



Dinette table folds away as seats make into 48" x 74" double bed in rear compartment.

Front sofa makes up into 52" x 76" double bed with divider drape for driver compartment.





## SPECIFICATIONS

### Standard features in all Avion 23 Foot Motor Home interiors:

Choice of color-coordinated interiors  
Divider drape between living area and driver's compartment  
Soil-resistant upholstery  
High density 5 in. superfoam deluxe buttoned cushions  
Dinette table with seats, convertible to double bed  
Front sofa bed  
Sofa arm storage compartment  
Lined drapes throughout  
Built-in boot locker  
Handcrafted woodwork in light walnut finish  
Cornice boards with recessed lighting  
Overhead locker cabinets throughout  
Mica galley work tops  
Stainless steel double sink  
Two sink covers; one with underside cutting board, one with tumbler holders  
Single handle swing-type kitchen faucet with swivel spray aerator  
6 cu. ft. combination gas/electric refrigerator with freezer compartment  
Built-in 4-burner gas range with oven  
Range vent with filter, 12 volt power fan and light  
Complete bath with gold marine-type toilet, lavatory, shower, mirrored vanity and medicine chest, linen closet, shower curtain and telephone shower head with flexible hose.  
Crystal clear mirrors with ground edges  
Ceiling fan in bathroom  
Two 14 in. ceiling vents with fans  
Instrument signal center  
Onmpower electrical system with 85 amp, 12 volt battery, 110 volt converter-charger and fuse panel  
12 volt lighting throughout  
25 ft. 40 amp power cord with storage compartment

Pre-wired for air conditioner  
Television jack with 12 volt outlet and shielded lead-in wire  
Automatic 6 gallon electric water heater  
Automatic 12 volt water pump  
36 gallon fresh water storage  
40 gallon sewage holding tank  
Concealed water hose connection  
Manual water fill spout with lock  
30,000 BTU ducted, forced air gas furnace with fan  
45 lb. LP tank

#### AVAILABLE OPTIONS INCLUDE:

Side accent stripes  
Roof-mounted air conditioner  
Auxiliary motor generator (4,000 watt)  
Thermosan waste disposal system  
Electric water heater with engine preheat  
TV antenna

NOTE: "Avion Coach Corporation reserves the right to make changes at any time, without notice, in prices, color, materials, equipment specifications and to discontinue models or make improvements without incorporating such changes in models."

#### AVION COACH WARRANTY INFORMATION:

Avion Coach Corporation warrants the basic construction for any component equipment that is installed by the factory, except batteries, against defective material or workmanship for a period of twelve months from date of purchase.

We agree to repair or replace defective parts at no charge for parts or labor. All repairs to be made under the terms of this warranty shall be authorized in advance by Avion Service Corporation, 1576 East Empire Avenue, Benton Harbor, Michigan 49022.

Transportation to and from the authorized service center or dealer shall be the responsibility of the owner.

This warranty is in lieu of all other warranties, expressed or implied, and excludes conditions from normal wear, accident, abuse, exposure, overload or inadequate routine maintenance as suggested in the owner's manual.

## AVION COACH CORPORATION

1300 East Empire Avenue, Benton Harbor, Michigan 49022  
Phone: 616/927-2271/Selmer Solem, General Manager