



FOR GMC 26' MOTOR HOMES . . .

Interiors by Avion

Designed for Your Enduring Pleasure

The interior of your 26' GMC Motor Home has been designed and constructed to provide year after year of comfort and convenience. Every foot and every feature contributes to your ease and enjoyment of this carefree life style.

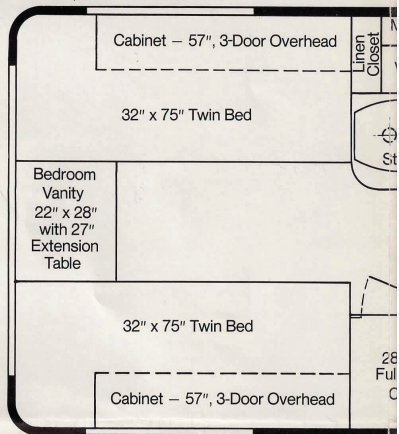
Your Avion interior features permanent beds and a vanity with unique pull-out table extension. Since the beds double as luxurious seating, the bedroom becomes an observation lounge for waking hours activities.

All interior cabinetry is beautiful Avion birchwood veneer in light walnut finish. Every cupboard, drawer and work surface has been hand-finished and custom-fitted to Avion standards. Our extensive experience in the special art of producing "traveling cabinetry" assures long, trouble-free life under the stress of vehicular movement.

Compare the Avion interior with that of any other motor home. Then enjoy it in the knowledge that there is no finer made.



Both features marine-type toilet, lavatory, and separate shower stall with telephone shower head on flexible hose, plus seat. Also mirrored vanity, medicine chest and linen closet.



Bedroom features permanent beds which double as seating by day. Vanity has unique table leaf which extends forward between beds for card games or other activities.

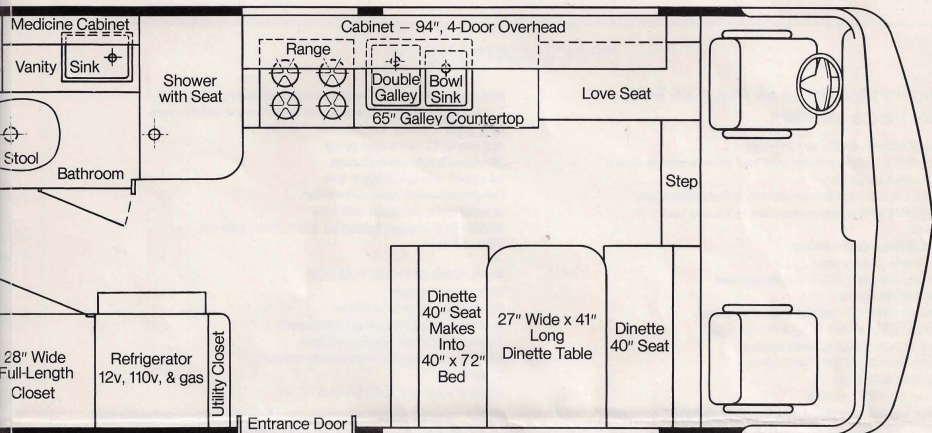




Galley has steel double sink, combination gas/electric refrigerator with freezer compartment, plus 4-burner gas range with full-size oven and broiler.

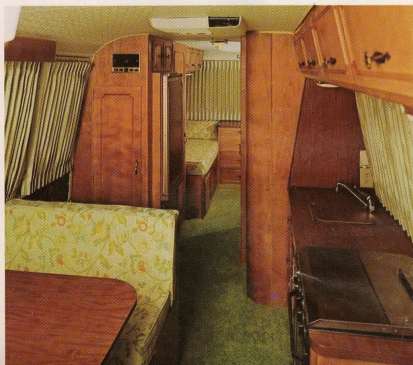


Dinette table and seats convert to double bed. Deep-pile carpeting extends into driver compartment. All interior fabrics are color-coordinated.



Overall design combines optimum storage with ample living area. All cabinetry is meticulously constructed and finished to assure beauty and convenience throughout the life of your motor home.

Combination gas/electric refrigerator offers six cubic feet of capacity, including freezer compartment. Note overhead locker cabinets and dinette storage compartment.



SPECIFICATIONS

Standard features in all Avion 26 Foot Motor Home interiors:

Choice of color-coordinated interiors
 Divider drape between living area and driver's compartment
 Soil resistant upholstery
 High density 5 in. superfoam deluxe buttoned cushions
 Dinette table with seats, convertible to double bed
 Love seat
 Dinette storage compartment
 Lined drapes throughout
 Carpeting, including driver's compartment
 Permanent twin beds
 Bedroom vanity with built-in extension table
 Handcrafted woodwork in light walnut finish
 Cornice boards with recessed lighting
 Overhead locker cabinets throughout
 Mica galley work tops
 Stainless steel double sink
 Two sink covers; one with underside cutting board, one with tumbler holders
 Single handle swing-type kitchen faucet with swivel spray aerator
 6 cu. ft. combination gas/electric refrigerator with freezer compartment
 Built-in 4-burner gas range with full-size oven and broiler
 Range vent with filter, 12 volt power fan and light
 Complete bath with gold marine-type toilet, lavatory, linen closet, mirrored vanity and medicine chest, separate shower stall with telephone shower head on flexible hose, plus seat
 Crystal clear mirrors with ground edges
 Ceiling fan in bathroom
 Instrument signal center
 Two 14 in. ceiling vents with fans
 Omnipower electrical system with two 85 amp, 12 volt batteries, 110 volt converter-charger and fuse panel
 12 volt lighting throughout
 25 ft. 40 amp power cord with storage compartment

Pre-wired for two roof-mounted air conditioners
 Television jack with 12 volt outlet and shielded lead-in wire
 Automatic 6 gallon electric water heater
 Automatic 12 volt water pump
 36 gallon fresh water storage
 40 gallon sewage holding tank
 Concealed water hose connection
 Manual water fill spout with lock
 30,000 BTU ducted, forced air gas furnace with fan
 70 lb. LP tank

AVAILABLE OPTIONS INCLUDE:

Side accent stripes
 Roof-mounted air conditioner
 Auxiliary motor generator (6,000 watt)
 Thermo-san waste disposal system
 Electric water heater with engine preheat
 TV antenna
 Bolster bunk bed (upholstered)

NOTE: "Avion Coach Corporation reserves the right to make changes at any time, without notice, in prices, color, materials, equipment specifications and to discontinue models or make improvements without incorporating such changes in models."

AVION COACH WARRANTY INFORMATION:

Avion Coach Corporation warrants the basic construction for any component equipment that is installed by the factory, except batteries, against defective material or workmanship for a period of twelve months from date of purchase.

We agree to repair or replace defective parts at no charge for parts or labor. All repairs to be made under the terms of this warranty shall be authorized in advance by Avion Service Corporation, 1576 East Empire Avenue, Benton Harbor, Michigan 49022.

Transportation to and from the authorized service center or dealer shall be the responsibility of the owner.

This warranty is in lieu of all other warranties, expressed or implied, and excludes conditions from normal wear, accident, abuse, exposure, overload or inadequate routine maintenance as suggested in the owner's manual.

AVION COACH CORPORATION

1300 East Empire Avenue, Benton Harbor, Michigan 49022
 Phone: 616/927-2271/Selmer Solem, General Manager