



Introducing Palm Beach. Gracious living in a special-edition MotorHome from GMC.



Palm Beach is the newest edition in a line of distinctive GMC MotorHomes. Like its predecessors, it is sleek, rather than boxy. The Palm Beach is produced as a special, limited edition. It has four skillfully executed floor plans. One specially appointed interior decor. One size only. Some popular features that might be extra-cost options on some motorhomes are standard on this GMC. And the interior features a bright and pleasing green plaid upholstery, as well as solid lime green driver and passenger seats.

Custom-home design.

Palm Beach exhibits the high quality inherent in custom-built homes. The interior is luxuriously appointed. Hand craftsmanship is evident everywhere. The colors are rich and beautifully coordinated. Palm Beach is exactly what a personal second home should be.

Driver environment.

In the captain's chair of Palm Beach, you survey the world through twenty-three square feet of windshield. Immediately in front of you is an array of instruments, switches and gauges strategically

For the 'chef de cuisine':

Standard features in the kitchen delight any finicky cook. Like the efficient range with full-size oven with glass door. And the roomy 7½ cubic foot refrigerator/freezer. Or the stainless steel double-bowl sink with single-lever faucet. The sink even houses a wooden cutting board that reverses into a drink tray. Convenient!



placed in a color-coordinated panel. You can set the available Cruise Control at the speed you desire, adjust the standard tilt steering wheel and maintain your course with minimal effort. If you've ordered the AM/FM stereo, there's the added enjoyment of cruising to your favorite tune.

Luxurious, quiet quarters.

Palm Beach offers a plush environment in which to relax, sleep, dine . . . or just chat with friends. The dinette is the perfect place to enjoy your meals in quiet luxury. It also serves as a lounge area—just recline the seats and either remove or flip the table out of the way.

For an extra touch of elegance, the walls by the dinette and settee are padded. For extra privacy, Palm Beach's rear compartment is easily separated from the forward area. And there's a new drapery design with special blackout lining and efficient mounting snaps, top and bottom.

For added luxury, rich, green shag carpeting and simulated walnut paneling abound. Interior cabinetry is crafted from real wood. And doors and cabinet fronts are louvered. Luxurious, yes. But functional as well.



Craftsmanship is a hand-sanded drawer.

Palm Beach offers a long list of impressive standard features. Like the new hand-sanded cabinet drawers. Every inside surface must be silken-smooth before it is wood-burned with our name, "Quality Built by GMC". And for added strength, drawers are of dovetailed construction with glued joints—no staples. There's also a well-designed wardrobe area, complete with a full-length plate glass mirror, ample hanging space and six drawers separated by dust shields.



Inside, there's quiet. Serenity.

To help keep things quiet inside the Palm Beach, there's high-quality insulation liberally applied throughout. Immediately beneath the floor are molded polyurethane foam panels sandwiched between aluminum supports. And around the windows and covering the ceiling there is more polyurethane insulation. Sprayed on to conform to Palm Beach's interior contours.

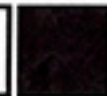


Convertibles.

The couch, rear settee and the dinette offer comfortable seating and sleeping accommodations. The couch converts to upper and lower bunks; the settee to a double bed. And the dinette sleeps two or seats four.

More features that are standard.

Also standard on Palm Beach: 455-cubic-inch V-8 engine with 3-speed automatic transmission • front wheel drive • hydraulic front and rear bumpers • 6-wheel power brakes • power steering • independent air-suspended tandem rear wheels with automatic height control • dual 25-gallon fuel tanks • 62 lb. propane tank • 30,000 BTU heating system • 40-gal. water tank, demand pump and 6-gal. electric water heater • 32-gal. holding tank • 150 amp./hr. battery with converter/charger • molded bathroom module with basin, medicine cabinet and toilet.



THE MOTOR HOME FROM GENERAL MOTORS

Vehicles shown illustrate standard or available factory-installed equipment unless noted as dealer installed accessories. Items referred to as options or available are at extra cost.

GMC Truck & Coach Division reserves the right to make changes at any time without notice in prices, colors, materials, equipment, specifications and models and also to discontinue models. Data shown is basic information for the prospective buyer effective at time of issuance of this pamphlet. Dealer will provide complete up-to-date information on available equipment, specifications, etc. not shown here.